

ROCBOLT TECHNOLOGIES CHINA LTD

# 捷马（济宁）矿山支护设备制造有限公司



Ground Control Technology  
for the Mining and Tunneling Industry



## **ROCBOLT TECHNOLOGIES CHINA LTD**

Rocbolt Technologies China strives to be the foremost manufacturer and supplier of specialized ground control products to the underground mining and geotechnical industries of China. We have the unique ability to draw upon expertise from a diverse number of mining locations to deliver sophisticated, safe and cost effective solutions to our clients. Our experienced staff of skilled personnel provides a comprehensive range of industry knowledge and a complete package of high quality ground support products, systems and engineered solutions. Our quest for better solutions and technology is a critical part of our strategy of ongoing research and development.

**ROCBOLT TECHNOLOGIES CHINA LTD**  
Address: Jennmar Industry Park, Tong Ji Road,  
Gao Xin District, Jining, Shandong, China  
Post Code: 272023  
Tel: +86-537-2480336  
Fax: +86-537-2480338

## Technical Consulting and Service

A strong engineering team provides clients with ground control system design.

- Underground research to give you the safer, faster and cheaper solution
- On-site training and test
- On site performance instrumentation and evaluation





Rocbolt Technologies is not just supplying you with varieties of ground control

## Manufacturing and Servicing

products, it supplies you the ground control system. A strong engineering team includes 2PhDs,3 masters,2 senior engineers and a number of under ground technicians. Over 15 years of experiences in Chinese Mining Industry, this team has done more than 50 major ground control projects for the difficult mining and geological conditions and some of the research projects have been awarded by the national, provincial and local levels. Rocbolt technology has invented unique ground control system design method and products:4-working points yieldable system design for deep mine and soft rock.5-working points energy releasing and absorbing system design for rock burst conditions. They have been successfully applied in the mining industry over Chinese mining.



**ROCBOLT TECHNOLOGIES CHINA LTD**  
Address: Jennmar Industry Park, Tong Ji Road,  
Gao Xin District, Jining, Shandong, China  
Post Code: 272023  
Tel:+86-537-2480336  
Fax:+86-537-2480338

## QA/QC Management ensure you:

- High quality products
- Tracing
- Customer feedback
- Products improvement



**ROCBOLT TECHNOLOGIES CHINA LTD**  
Address: Jennmar Industry Park, Tong Ji Road,  
Gao Xin District, Jining, Shandong, China  
Post Code: 272023  
Tel:+86-537-2480336  
Fax:+86-537-2480338



## Products Manufacturing

The advanced production lines provide you with:

- Quality products
- Varieties of products
- New products development



**ROCBOLT TECHNOLOGIES CHINA LTD**  
Address: Jennmar Industry Park, Tong Ji Road,  
Gao Xin District, Jining, Shandong, China  
Post Code: 272023  
Tel:+86-537-2480336  
Fax:+86-537-2480338



## 营 业 执 照

(副 本)

1-1

统一社会信用代码 913708007636916047

名 称	捷马（济宁）矿山支护设备制造有限公司
类 型	有限责任公司(外国法人独资)
住 所	济宁高新区亨通工业园
法定代表人	WANG YAJIE
注册资本	美元 伍佰万元整
成立日期	2004年07月02日
营业期限	2004年07月02日至2026年07月01日
经营范围	生产锚杆、锚索煤矿顶板支护产品；销售本公司产品并为公司产品提供技术咨询和售后服务。（依法须经批准的项目，经相关部门批准后方可开展经营活动，有效期限以许可证为准）

  
登 记 机 关

年 月 日

提示：1. 每年1月1日至6月30日，企业应当通过企业信用信息公示系统报送并公示上一年度年度报告，不另行通知；  
2. 《企业信息公示暂行条例》第十七条规定：除依法须经公示的企业信息外，企业还应当公示下列信息：（一）企业年度报告；（二）企业联系方式；（三）企业对外投资信息；（四）企业分支机构信息；（五）企业资产状况信息；（六）企业信用信息；（七）企业其他信息。

企业信用信息公示系统网址：  
2017 03 27  
中华人民共和国国家工商行政管理总局监制





**Mine Safety Certificates**



**ISO 9001 Certificates**

**ROCBOLT TECHNOLOGIES CHINA LTD**  
**Address: Jennmar Industry Park, Tong Ji Road,**  
**Gao Xin District, Jining, Shandong, China**  
**Post Code: 272023**  
**Tel:+86-537-2480336**  
**Fax:+86-537-2480338**



## CONTACTS

Ya Jiewang  
General Manager  
E-mail: yajiewang@hotmail.com  
Mobile: +86-537-2480336

Erica Zhang  
The international trade specialist  
Email:  
ericazhang@rocboltchina.com  
Mobile: +86-18354781186



ROCBOLT TECHNOLOGIES CHINA LTD  
Address: Jennmar Industry Park, Tong Ji Road,  
Gao Xin District, Jining, Shandong, China  
Post Code: 272023  
Tel:+86-537-2480336  
Fax:+86-537-2480338

# CONTENTS

## ROCK BOLTS&ACCESSORIES

20mm J-Tech Bolt- - - - -	-12
25mm J-Tech Bolt- - - - -	-13
25mm Hawkeye Bolt- - - - -	-14
20mm J-Tech Nut - - - - -	-15
25mm J-Tech Nut - - - - -	-16
20mm Coupler - - - - -	-17
25mm Coupler - - - - -	-18
25mm U hanger Nut - - - - -	-19
T38 Dolly - - - - -	-20
36AF Dolly to suit J-Tech Bolt - - - - -	-21
Dolly to suit J-Tech Bolt - - - - -	-22
Hawkeye Nut Drive - - - - -	-23
39mm Friction Lok Stabilizer - - - - -	-24
46mm Friction Lok Stabilizer - - - - -	-25
Hollow Self Drilling Bolt - - - - -	-26
Hollow Self Drilling Bolt accessories - - - - -	-27
Fibreglass Bolt - - - - -	-28
Fibreglass Bolt Accessories- - - - -	-29

## CABLE BOLTS&ACCESSORIES

15.24mm Bulbed Cable Reel- - - - -	-31
17.8mm Bulbed Cable Reel- - - - -	-32
Dynamic Cable Bolt- - - - -	-33
17.8mm Fish Hook Cable Bolt- - - - -	-34
21.8mm Fish Hook Cable Bolt- - - - -	-35
Barrel and Wedge - - - - -	-36
Yield Tube- - - - -	-37
Tension Block - - - - -	-38

## STEEL MESH

Woven mesh - - - - -	-40
ST Mesh- - - - -	-41
Mesh Roll- - - - -	-42

## PLATES

Domed Plate for J-Tech Bolt - - - - -	-44
Volcano Plate for Cable Bolt - - - - -	-45
Roll Top Plate- - - - -	-46
Cable Sling Plate- - - - -	-47
Mesh Plate- - - - -	-48

## GROUT

Grout- - - - -	-50
----------------	-----

## RESIN CAPSULES&ACCESSORIES

Fast Resin Capsules - - - - -	-52
Slow Resin Capsules - - - - -	-53
Medium Resin Capsules - - - - -	-54
2.4m Resin Capsules - - - - -	-55
3.0m Resin Capsules - - - - -	-56
Resin Capsules Accessories- - - - -	-57



# **MINING PRODUCTS**

## **SECTION 1**

### **ROCK BOLTS & ACCESSORIES**

**ROCBOLT TECHNOLOGIES CHINA LTD**  
Address: Jennmar Industry Park, Tong Ji Road,  
Gao Xin District, Jining, Shandong, China  
Post Code: 272023  
Tel:+86-537-2480336  
Fax:+86-537-2480338



## PRODUCT NAME:

**20mm J-Tech Bolt**

## Rocbolt Part number:

RCJTB2024TTNPG

## OT Material number :

20655384

## Technical Features:

- Left hand thread bar
- Suitable for use with either resin capsules or grout
- Paddle resin mixing device actively promotes resin mixing and anchorage in smaller hole diameters
- Dome nut design allows the use of a standard 36mm A.F. tightening spanner
- Various torque rated shear pin break-out nuts available for use on J-Tech 20mm bolts
- Available in black or galvanized



Physical properties	20mm bar Properties Minimum		20mm bar Properties Typical	
	Mpa	kN	Mpa	kN
Yield Strength	500	160	550	170
Tensile strength	600	190	700	220
Standard Elongation	Min	15%	Typical	20%
Bar diameter(mm)	core	19.5	Major	23mm
Cross sectional Area(mm <sup>2</sup> )	314			
Mass per meter(kg)	2.46			
Drill hole size Paddle (mm)	32-38			

## PRODUCT NAME:

**25mm J-Tech Bolt**  
**2.4M& 3M**

## Rocbolt Part number:

**2.4M:** RCJTB2524TTNPHG

**3M:** RCJTB2530TTNPHG

## OT Material number :

**2.4M :** 41110841

**3M:** 41110842

## Technical Features:

- Left hand thread bar
- Suitable for use with either resin capsules or grout
- Paddle resin mixing device actively promotes resin mixing and anchorage in smaller hole diameters
- Finer 6mm pitch thread achieves higher tension for a given torque
- Dome nut design allows the use of a standard 36mm A.F. tightening spanner
- Various torque rated shear pin break-out nuts available for use on J-Tech 25mm bolts
- Available in black or galvanized
- T38 drive dollies available in any length



Physical properties	25mm bar Properties Minimum		25mm bar Properties Typical	
	Mpa	kN	Mpa	kN
Yield Strength of Steel	500	215	565	245
Tensile strength of Steel	600	260	650	290
Standard Elongation	Min	15%	Typical	20%
Bar diameter(mm)	Core	23	Major	25
Cross sectional Area(mm <sup>2</sup> )	433			
Mass per meter(kg)	3.4			
Drill hole size Paddle (mm)	32-38			

## PRODUCT NAME:

**25mm Hawkeye Bolt**  
**2.4M&3M**

## Rocbolt Part number:

**2.4M:** RCHE2524TTNPHG

**3M:** RCHE2530TTNPHG

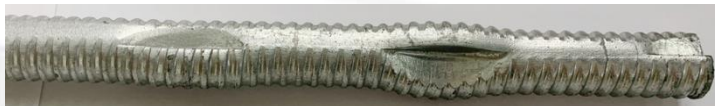
## OT Material number :

**2.4M:** 20704851

**3M:** 20704852

## Technical Features:

- Patented system for the elimination of protruding bolt tails minimizes tyre, bolt damage, and improves mine safety.
- Full pre-tension achieved which clamps damaged rock mass together on walls and gradeline
- Full column resin encapsulated
- Easily installed from standard bolting machines
- 32mm Press paddled bolt end to promote efficient resin mixing
- Available with a range of shear pins to suit required break out torque
- Available in lengths 900 – 3000mm
- Available in black or galvanized



Physical properties	25mm bar Properties Minimum		25mm bar Properties Typical	
	Mpa	kN	Mpa	kN
Yield Strength of Steel	500	215	565	245
Tensile strength of Steel	600	260	650	290
Standard Elongation	Min	15%	Typical	20%
Mass per meter(kg)	3.4			



**PRODUCT NAME:**  
**20mm J-Tech Nut**

**Rocbolt Part number:**  
JTNUT20DOMED

**OT Material number :**  
n/a



## Technical Features:

- Allows centralization of the bolt onto the surface support maximizing load transfer in non-axial conditions
- Available in black or galvanized

## Physical properties

Dome Diameter (mm)	Hex Diameter (mm)	Hex Diameter (mm)	Weight (kg)
48	35	0.35	0.40

**PRODUCT NAME:**

**25mm J-Tech Nut**

**Rocbolt Part number:**

RCJTNUT25DOMED

**OT Material number :**

20753496



**Technical Features:**

- Allows centralization of the bolt onto the surface support maximizing load transfer in non-axial conditions
- Available in black or galvanized

**Physical properties**

Dome Diameter (mm)	Hex Diameter (mm)	Hex Diameter (mm)	Weight (kg)
54	35	0.35	0.40

**PRODUCT NAME:**

**20mm Coupler**

**Rocbolt Part number:**

RCJCOUPLER20TB

**OT Material number :**

20753494



**Technical Features:**

- Allows for versatility in support options
- Multiple bar lengths can be joined together to maximize reinforcement length as required
- Load tested for capacity compatibility with the J-Tech bar
- Available in black or galvanized

**Physical properties**

Length (mm)	OD (mm)	Weight (mm)
130	35	0.50



**PRODUCT NAME:**

**25mm Coupler**

**Rocbolt Part number:**

RCJCOUPLER25TB

**OT Material number :**

20753495



**Technical Features:**

- Allows for versatility in support options
- Multiple bar lengths can be joined together to maximize reinforcement length as required
- Load tested for capacity compatibility with the J-Tech bar
- Available in black or galvanized

**Physical properties**

Length (mm)	OD (mm)	Weight (mm)
130	35	0.50

**PRODUCT NAME:**

**25mm U Hanger Nut**

**Rocbolt Part number:**

RCJTNUT123DHANGG

**OT Material number :**

20338353



**Technical Features:**

- 8mm diameter “U” hanger
- Available in all thread types
- Readily threaded onto the base of rock bolts for use as a hanger
- Available in black or galvanized

**Physical properties**

Length (mm)	Width (mm)	Weight (kg)	Load Rating (ton)
90	35	0.35	2

**PRODUCT NAME:**

**T38 Dolly 900MM**

**Rocbolt Part number:**

**T38:**RCT38DFM90036AF

**Hawkeye:** RCT38DFM90030SQ

**OT Material number :**

**T38:**20700912

**Hawkeye:**20753502



**Technical Features:**

- High quality, hardened, long lasting resin bolt 36AF driver
- Available for either “T” or “R” thread systems

**Physical properties**

Drive (mm)	Length (mm)	Socket (mm)	Weight (kg)
T38	900	36 Hex	13



**PRODUCT NAME:**

**T38 Dolly 750MM**

**Rocbolt Part number:**

RCT38DFM75036AF

**OT Material number :**

20338393



**Technical Features:**

- High quality, hardened, long lasting resin bolt 36AF driver
- Available for either "T" or "R" thread systems

**Physical properties**

Drive (mm)	Length (mm)	Socket (mm)	Weight (kg)
T38	750	36 Hex	11

**PRODUCT NAME:**

**T38 Dolly 600MM**

**Rocbolt Part number:**

RCT38DFM60036AF

**OT Material number :**

20700911



**Technical Features:**

- High quality, hardened, long lasting resin bolt 36AF driver
- Available for either “T” or “R” thread systems

**Physical properties**

Drive (mm)	Length (mm)	Socket (mm)	Weight (kg)
T38	600	36 Hex	9

**PRODUCT NAME:**

**36 AF Dolly to suit J-Tech bolt**

**Rocbolt Part number:**

RCT38DFM60036AF;  
RCJDOPANTHER36AF;  
RCDOPANTHER20TB

**OT Material number :**

20669607; 20753501;  
20669609



**Technical Features:**

- 36AF dolly for installation of J-Tech bolts and nuts utilizing 36AF socket

**Physical properties**

Drive (mm)	Length (mm)	Socket (mm)	Weight (kg)
22	300	36 Hex	4



**PRODUCT NAME:**

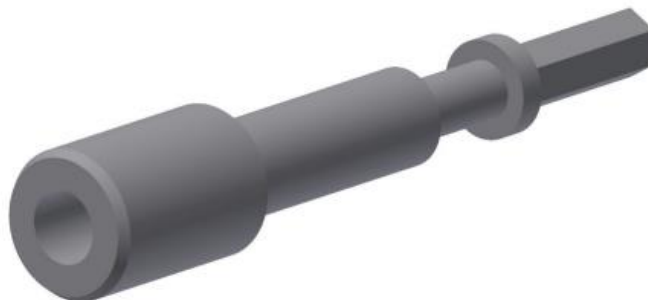
**Dolly to suit J-Tech bolt**

**Rocbolt Part number:**

RCJDOPANTHERR25TB

**OT Material number :**

20669610



**Technical Features:**

- Dolly with Oval socket designed for installation of 20mm J-Tech Bolts
- 25mm version available

**Physical properties**

Drive (mm)	Length (mm)	Socket (mm)	Weight (kg)
22 hex	300	20 oval	3

**PRODUCT NAME:**

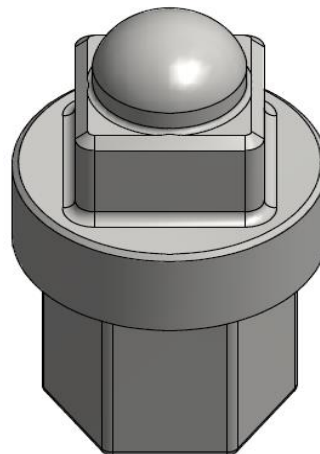
**Hawkeye Nut Driver**

**Rocbolt Part number:**

RCJDOPANTHERR25TB

**OT Material number :**

20669610



**Technical Features:**

- Unique driver to fit 36AF hex socket
- Hand held installation option

**Physical properties**

Drive (mm)	Socket (mm)	Weight (kg)
30 square	36 Hex	0.8

## Technical features:

### PRODUCT NAME:

**39MM Friction-Lok Stabilizer**

### Rocbolt Part number:

RCFL3909G

**Black:** RCFL3909B

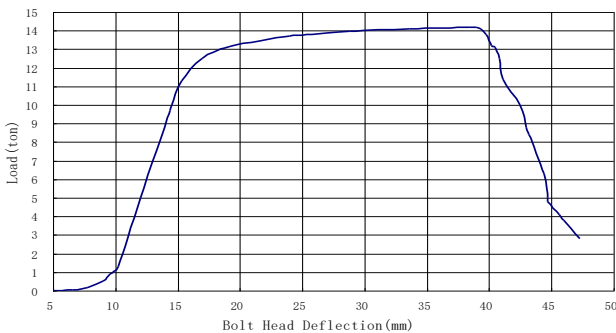
### OT Material number :

20723070

**Black:** 20655382

- Friction-Lok stabilizer can be used in a variety of ground conditions for immediate ground support, but is suitable for very soft strata and permanent support.
- Friction-Lok stabilizer is a kind of yieldable bolt. It can be used in fractured/squeezing strata conditions of dynamic stress.
- The bolts provides immediate strata supporting trough the friction between split tube and drillhole wall.
- Once the maximum frictional resistance is overcome , the bolt starts to slide and keeps a constant supporting load at a rate of 0.75-1.0 ton per foot anchorage (depending on the diameter and strata)
- High strength split tube headed with welded ring
- Dome plate
- Easy and fast to install
- No tension needed
- Sensitive to drill hole size
- Available in black or galvanized

FL39 Lab Pull Test



Bolt type	Tube diameter (mm)	Typical length (mm)	Drill hole diameter (mm)	Physical properties		
				Typical yield (ton)	Typical tensile (ton)	Typical anchorage (ton/m)
FL39	39	As required	35-38	12	14	2.46-3.28
Mass per meter(kg)	1.8					



## PRODUCT NAME:

**46MM Friction-Lok Stabilizer  
2.4M& 5M**

## Rocbolt Part number:

**2.4M:RCFL4624G**

**5M: RCFL4650G**

## OT Material number :

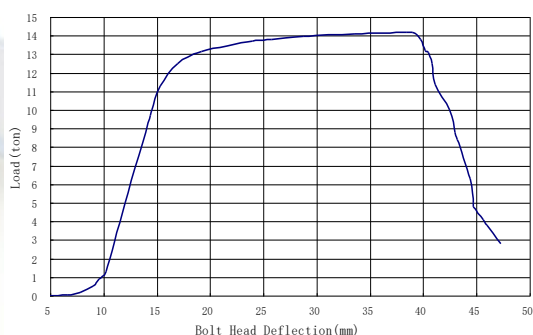
**2.4M:20708700**

**5M: 20708943**

## Technical features:

- Friction-Lok stabilizer can be used in a variety of ground conditions for immediate ground support, but is suitable for very soft strata and permanent support.
- Friction-Lok stabilizer is a kind of yieldable bolt. It can be used in fractured/squeezing strata conditions of dynamic stress.
- The bolts provides immediate strata supporting trough the friction between split tube and drillhole wall.
- Once the maximum frictional resistance is overcome , the bolt starts to slide and keeps a constant supporting load at a rate of 0.75-1.0 ton per foot anchorage (depending on the diameter and strata)
- High strength split tube headed with welded ring
- Dome plate
- Easy and fast to install
- No tension needed
- Sensitive to drill hole size
- Available in black or galvanized

FL39 Lab Pull Test



Bolt type	Tube diameter (mm)	Typical length (mm)	Drill hole diameter (mm)	Physical properties		
				Typical yield (ton)	Typical tensile (ton)	Typical anchorage (ton/m)
FL46	46	As required	42-45	16	18	3.28-4.92
Mass per meter(kg)	2.6					

## PRODUCT NAME:

**Hollow Self Drilling Bolts**

## Rocbolt Part number:

**2M:** RCSDHBR3220N

**2.4M:** RCSDHBR3224N

**3M:** RCSDHBR3230N

**2M GALV:** RCSDHBR3224G

**2.4 GALV:** RCEDNR3224

**3M GALV:** RCR32SDB3046AFNUTG

**Plate:** RCV20201440G

## OT Material number :

**2M:** 20655389

**2.4M:** 20753500

**3M:** 20662939

**2M GALV:** 20734188

**2.4 GALV:** 20805120

**3M GALV:** 20734189

**Plate:** 20659095



## Technical Features:

- Installation for very poor ground
- Continuous thread profile to enhance the ability of
- achieving better load transfer in varying ground conditions
- Reliable self-drilling installation with single pass drilling and grouting installation
- Available in a range of standard lengths with requested lengths available on request
- Available in black or galvanized

## Physical properties

Technical Data	R32N
Length(mm)	2000/2400/3000
Outer Diameter(mm)	32
Min Yield Load (kN)	230
Tensile Load Typical (kN)	280
Min Tensile strength)(Mpa)	650
Typical Yield strength (Mpa)	530
Elongation rate (A100mm)	≥ 6%
Mass per meter(kg)	3.4

## PRODUCT NAME:

**Hardened Cross-Cut Drill Bit**

## Rocbolt Part number:

RCSDR32D42ES;

RCSDR32D42EXX

## OT Material number :

20734187;

20734186



## Physical properties

Item	DB Size (mm)	Drill Dia (mm)	Description/Applic ation
Bit	R32/51	51	Hardened Cross Bit

捷马

ROCBOLT  
TECHNOLOGIES  
CHINA

济宁



**PRODUCT NAME:**

**Self Drilling Bolt (R32 NUT)**

**Rocbolt Part number:**

RCSDHBNR3265

**OT Material number :**

20470821



**Physical properties**

Item	Hex Size (mm)	Length (mm)	Outside Diameter (mm)	Suit Plate Hole Size (mm)	Weight (kg)
R32 Dome Nut	46	45	-	40	0.40

**PRODUCT NAME:**  
**Self Drilling Bolt (Spacer)**

**Rocbolt Part number:**  
JSPACERR32

**OT Material number :**  
20662940



## Physical properties

Item	Hex Size (mm)	Length (mm)	Outside Diameter (mm)	Suit Plate Hole Size (mm)	Weight (kg)
R32 Dome Nut	46	45	-	40	0.40
R32N Coupler	-	160	42	-	0.85
Spacer	-	30	72	-	0.30

**PRODUCT NAME:**  
**Self Drilling Bolt (Coupler)**

**Rocbolt Part number:**  
RCSDBNR3245

**OT Material number :**  
20805121



## Physical properties

Item	Hex Size (mm)	Length (mm)	Outside Diameter (mm)	Suit Plate Hole Size (mm)	Weight (kg)
R32N Coupler	-	160	42		0.85

## PRODUCT NAME:

**Fiberglass Bolt**

## Rocbolt Part number:

**2.4M:** RCFG2224LH

**3M:** RCFG2230LH

**Nut:** RCFGNUT32THLH

## OT Material number :

**2.4M:** 20708947

**3M:** 20708948

**Nut:** 20708949



## Technical Features:

- Used for ground support where extraction includes cutting of bolts
- High torsional strength material minimises risk of
- damage to fibreglass from twisting
- Continuous rope thread providing large deformations for resin mixing and high bond strength with the rock
- 22mm diameter dowel for high strength and maximum encapsulation by volume

## Physical properties

Rod Diameter (mm)	Length (mm)	UTS Rod (Ton)	UTS with Nut (Ton)	Rod Single Shear Strength (kN)	Shank Torque (N.m)
22	2400/3000	>25	>5	>100	>70
Mass per meter(kg)	0.7				



**PRODUCT NAME:**

**Fiberglass Bolt Plate**

**Rocbolt Part number:**

RCPLAS150

**OT Material number :**

20708950



**Technical Features:**

- Used as surface support where extraction involved cutting the support
- Compatible with 22mm dowels
- Flexibility of all plastic allow conforming to shape of the ground
- Tested to ensure no splitting under severe deformation found in uneven ground

**Physical properties**

Shape	Dimensions (mm)	Hole Diameter (mm)	Collapse Load (ton)	Weight (kg)
Round	140 diameter	35	7	0.75



# **MINING PRODUCTS**

## **SECTION 2**

### **CABLE BOLTS & ACCESSORIES**

**ROCBOLT TECHNOLOGIES CHINA LTD**  
Address: Jennmar Industry Park, Tong Ji Road,  
Gao Xin District, Jining, Shandong, China  
Post Code: 272023  
Tel:+86-537-2480336  
Fax:+86-537-2480338

**PRODUCT NAME:**  
**15.2MM Bulbed Cable Reel**

**Rocbolt Part number:**  
RCR1528001BM

**OT Material number :**  
41111435



## Technical Features:

- Available in plain or bulbed cable reels
- Lowest cost to capacity cable bolt configurations for the hard rock mining industry
- Typically fitted with fish-hooks to hold the cables inside the drill holes or cable reels for mechanical bolt installation
- Cables are coiled for transport efficiency
- Available in black or galvanized

Physical properties	Diameter
	15.24mm
Yield Strength(Min)	210
Yield Strength(max)	240
Ultimate Tensile Strength(min)	250
Ultimate Tensile Strength(Max)	270
Elongation(min)	5%
Bulb outside diameter(mm)	23-27
Bulb spacing(mm)	1000
Mass per meter(m/kg)	1.143

## PRODUCT NAME:

**17.8MM Bulbed Cable Reel**

## Rocbolt Part number:

**400M:** CR178400G

**400M Galv:** RCCR1784001BMG

**500M:** RCCR1785001BMG

**600M:** CR178600B

**730M:** RCCR1787301BM

## OT Material number :

**400M:** 20750516

**400M Galv:** 20750514

**500M:** 20659090

**600M:** 20750515

**730M:** 20655386



## Technical Features:

- Available in plain or bulbed cable reels
- Lowest cost to capacity cable bolt configurations for the hard rock mining industry
- Typically fitted with fish-hooks to hold the cables inside the drill holes or cable reels for mechanical bolt installation
- Cables are coiled for transport efficiency
- Available in black or galvanized

Physical properties	Diameter
	17.8mm
Yield Strength(Min)	280
Yield Strength(max)	310
Ultimate Tensile Strength(min)	350
Ultimate Tensile Strength(Max)	370
Elongation(min)	5%
Bulb outside diameter(mm)	30-36
Bulb spacing(mm)	1000
Mass per meter(m/kg)	1.75



## PRODUCT NAME:

**Dynamic Cable bolts**

## Rocbolt Part number:

**400M:**RCGRACOM178400B

**600M:** RCGRACOM178600B

## OT Material number :

**400M:**20750517

**600M:** 20659093



## Technical Features:

- Manufactured from high strength, stress relieved, Dynamic cable is available in a number of configurations from reels to precut lengths
- Available as plain or hot dip galvanised for corrosion protection

Physical properties	Tensile (ton)
	17.8mm
Yield Strength(Min)	280
Yield Strength(max)	310
Ultimate Tensile Strength(min)	350
Ultimate Tensile Strength(Max)	370
Elongation(min)	5%
Bulb outside diameter(mm)	30-36
Bulb spacing(mm)	1000
Mass per meter(m/kg)	1.75

## PRODUCT NAME:

**17.8MM Fish Hook Cable Bolts**

## Rocbolt Part number:

**6.5M:** RCCB178065FH1BMG

**8.5M:** RCCB178085FH1BMG

## OT Material number :

**6.5M:** 20753498

**8.5M:** 20753499



## Technical Features:

- Easy installation from the ground, jumbo or integrated tool carrier
- Available in plain strand, point anchor bulbing or fully bulbed
- Available in black or galvanized

Physical properties	Diameter
	17.8mm
Length(m)	6.5/8.5
Yield Strength(Min)	280
Yield Strength(max)	310
Ultimate Tensile Strength(min)	350
Ultimate Tensile Strength(Max)	370
Elongation(min)	5%
Bulb outside diameter(mm)	30-36
Bulb spacing(mm)	1000
Mass per meter(m/kg)	1.75

## PRODUCT NAME:

**21.8MM Fish Hook Cable Bolts**

## Rocbolt Part number:

RCCB2213FHDBG

## OT Material number :

20417306



## Technical Features

- Easy installation from the ground, jumbo or integrated tool carrier
- Available in plain strand, point anchor bulbing or fully bulbed
- Available in black or galvanized

Physical properties	Diameter
	21.8mm
Length(m)	8.5/9.5/14.5
Yield Strength(Min)	495
Yield Strength(max)	525
Ultimate Tensile Strength(min)	570
Ultimate Tensile Strength(Max)	590
Elongation(min)	5
Bulb outside diameter(mm)	35-40
Bulb spacing(mm)	1000
Mass per meter(m/kg)	2.46

## PRODUCT NAME:

**Barrel & Wedge**

## Rocbolt Part number:

**15.2MM:** RCBW152MM

**17.8MM:** RCBW178MMDEP

**17.8MM Galv:** RCBW178MMD

**21.8MM:** BW218MMDEP

## OT Material number :

**15.2MM:**41111436

**17.8MM:**20659094

**17.8MM Galv:** 20655387

**21.8MM:** 20338296



## Technical Features:

- Domed Barrels & Wedges for 21.8mm ,17.8mm and 15.2mm diameter strand are used with volcano plates
- Flat Barrels and Wedges in 15.2mm are used on flat plates on cable bolts and with tension blocks on trusses
- All Barrels and Wedges have an oil film coating and are packaged in strong buckets for corrosion protection
- Available in black or galvanized

## Physical properties

Applicable Strand Diameter (mm)	Outer Diameter (mm)	Length (mm)	Weight (kg)
15.24	$46 \pm 1$	$45 \pm 1$	0.48
17.8	$53 \pm 1$	$53 \pm 1$	0.75
21.8	$68 \pm 1$	$62 \pm 1$	1.50



## PRODUCT NAME:

**Yield Tube**

## Rocbolt Part number:

RCYTB&W178MMD

## OT Material number :

20719824



## Technical Features:

- Yield Tube available for 17.8mm
- Supplied separately and easily installed, without changing current installation processes
- Allows improved application in squeezing ground
- Anti-corrosion coating available on request

## Physical properties

Applicable Strand Diameter (mm)	Outer Diameter (mm)	Inner Diameter (mm)	Thickness (mm)	Yield (ton)	Weight (kg)
17.8	40 $\pm$ 3	23 $\pm$ 2	4.5 $\pm$ 0.5	21-25	0.30

## PRODUCT NAME:

**Tension Block**

## Rocbolt Part number:

RCTB4WAY178

## OT Material number :

20719823



## Technical Features:

- Used for joining cable tails in formation of trusses and for bullnose/camelback/pillar wrap applications
- Flat Barrels and Wedges must be used with the tension blocks

## Physical properties

Applicable Strand Diameter (mm)	Length (mm)	Width (mm)	Height (mm)	Weight (kg)
15.24	240	75	75	10.60
17.8	288	75	75	13



# **MINING PRODUCTS**

## **SECTION 3**

### **STEEL MESH**

**ROCBOLT TECHNOLOGIES CHINA LTD**  
Address: Jennmar Industry Park, Tong Ji Road,  
Gao Xin District, Jining, Shandong, China  
Post Code: 272023  
Tel:+86-537-2480336  
Fax:+86-537-2480338

## PRODUCT NAME:

**Woven Mesh**

## Rocbolt Part number:

**2.2MX1.2M:** RCMW1222100100G

**2.2X2.2M:** RCMW2222100100G

**100X100MM:** RCMW4212100100G

## OT Material number :

**2.2MX1.2M:** 20708945

**2.2X2.2M:** 20655388

**100X100MM:** 20789138



## Technical Features:

- High strength woven mesh designed to minimize displacement and provide ground support system solutions
- Designed for long term support in extreme conditions such as draw points
- Cost efficient, extremely high capacity mesh module
- Easily installed from standard bolting machines
- Available in black or galvanized

Physical description	
Wire diameter (mm)	10
Aperture (mm)	100 × 100
Length(mm)	2200
Width(mm)	2200/1200
Yield Wire Strength (Mpa)	800
Wire Breaking load (Mpa)	1000
Twin perimeter wires to be welded at all intersections (kN)	10
Weight(kg/pc)	72



## PRODUCT NAME:

**ST Mesh**

## Rocbolt Part number:

**1.2X2.2M Galv:**RCSTM1222GWL

**2.2X2.2M Galv:** RCSTM2222GWL

**2X2M:** RCSTM2222BWL

**4.2x1.2M Galv:**RCSTM1242BWL

**4.2x2.2M Galv:** RCSTM2242GWL

## OT Material number :

**1.2X2.2M Galv:**20791267

**2.2X2.2M Galv:** 20753506

**2X2M:** 20753504

**4.2x1.2M Galv:**20791268

**4.2x2.2M Galv:** 20812022



## Technical Features:

- High strength ST mesh designed to minimize displacement and provide ground support system
- Designed for long term support in extreme conditions such as draw points
- Easy Installation from standard bolting machines
- Modular panels allowing multiple sheet installation together utilizing hooked design
- Available in black or galvanized

Physical properties	
Wire diameter(mm)	10
Aperture (mm)	100×100
Length(mm)	2200/4200
Width(mm)	2200/1200
10mm wire yield strength (MPa)	600
10mm wire breaking load(MPa)	950
Chainlink mesh wire diameter(mm)	5
Chainlink wire yield strength (MPa)	450
Chainlink wire breaking load(MPa)	550
Weight(kg/pc)	43

## PRODUCT NAME:

**Mesh Roll**

## Rocbolt Part number:

RCMR9018505004G

## OT Material number :

20669606



## Technical Features:

- Wire diameters, spacing and overall dimensions can be customised to suit particular applications
- Customised paint lines along the modules to suit roof bolt patterns
- Supplied product and specifications
- Available in black or galvanized

Physical properties	
Wire diameter(mm)	5
Length(mm)	7.5/9
Width(mm)	1.8
Aperture (mm)	60×60
Chainlink wire yield strength (MPa)	500
Weight(kg/square meter)	8



# **MINING PRODUCTS**

## **SECTION 4**

### **PLATES**

**ROCBOLT TECHNOLOGIES CHINA LTD**  
Address: Jennmar Industry Park, Tong Ji Road,  
Gao Xin District, Jining, Shandong, China  
Post Code: 272023  
Tel:+86-537-2480336  
Fax:+86-537-2480338

## PRODUCT NAME:

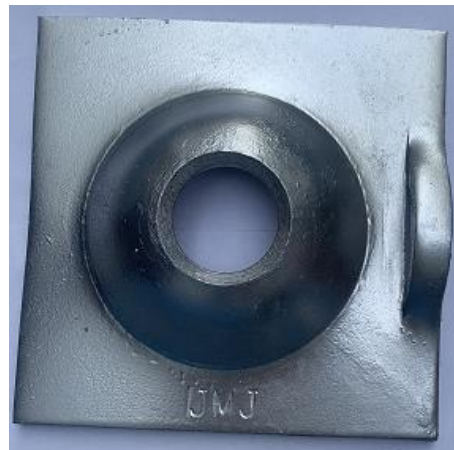
**Domed Plate for J-Tech bolt**

## Rocbolt Part number:

RCV15150836HG

## OT Material number :

41110839



## Technical Features:

- Designed for used with J-Tech bolts
- Available in black or galvanized

## Physical properties

Square Dimension (mm)	Thickness (mm)	Hole Diameter (mm)	Load Capacity (ton)	Weight (kg)	Standard pack
150 × 150	8	36	30	1.42	1000/pallet



## PRODUCT NAME:

**Volcano Plate for Cable Bolt**

## Rocbolt Part number:

**200x200Black:** RCV20201440;

**200x200:** RCV20201440G;

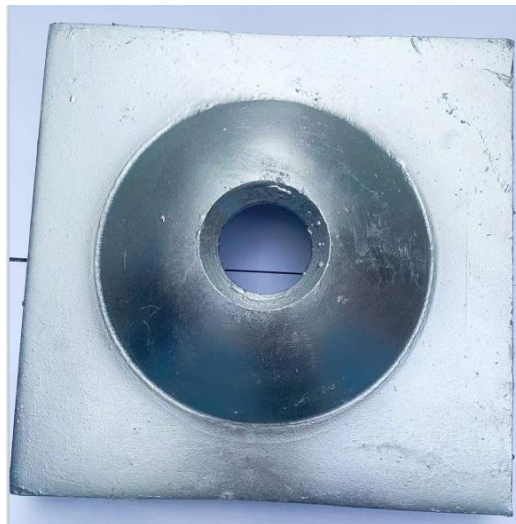
RCF202016242

## OT Material number :

**200x200 Black:** 20659091;

20340176

**200x200:** 20526573; 41111437



## Physical properties

### Technical Features:

- Designed for used with domed barrel and wedge for better alignment with non-axial installation
- Available in black or galvanized

### Physical properties

Square Dimension (mm)	Thickness (mm)	Hole Diameter (mm)	Load Capacity (ton)	Weight (kg)	Standard pack
200×200	14	40	58	4.40	400/pallet

## PRODUCT NAME:

**Roll Top Plate**

## Rocbolt Part number:

**4MM Black:**RCR15150440B

**4MM:** RC RTP150150440B

## OT Material number :

**4MM Black:**414111129

**4MM:** 20723091



## Technical Features:

- Same single plate compatible for 39mm and 47mm Friction Loks
- 50kg WLL hanger slot
- Available in black or galvanized

## Physical properties

Square Dimension (mm)	Thickness (mm)	Hole Diameter (mm)	Load Capacity (ton)	Weight (kg)	Standard pack
150×150	4	40	10	0.7	1000/pallet

## PRODUCT NAME:

**Cable Sling Plate**

## Rocbolt Part number:

**Plate:** RCV20201236WTG

**Spacer:** RCWL15017G

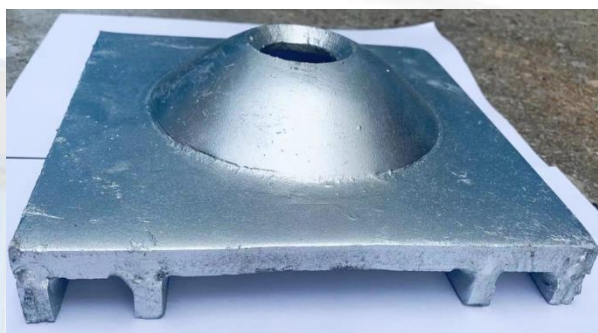
## OT Material number :

**Plate:**20719825

**Spacer:**20719826

## Technical Features:

- Profile allows the plate to secure the cable and prevent cable movement in high loading/squeezing ground
- Fully welded to accept high horizontal loading
- Available in black or galvanized



## Physical properties

Square Dimension (mm)	Thickness (mm)	Hole Diameter (mm)	Load Capacity (ton)	Weight (kg)	Standard pack
200×200	12	36	40	4.80	200/pallet



**PRODUCT NAME:**

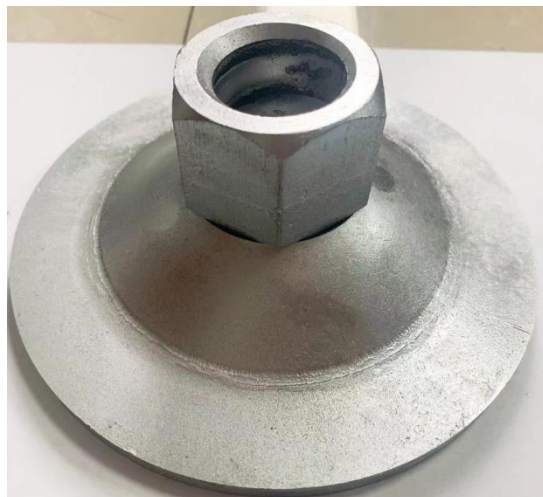
Mesh Plate

**Rocbolt Part number:**

RCM20032M6G

**OT Material number :**

20338355


**Technical Features:**

- For pinning mesh against the rock face over top of pre-installed rock bolts
- Welded nut of any size to thread onto existing installed rock bolts
- Extruded extra height to accommodate the standard tail length of an installed bolt, allowing the mesh to be pushed tight against the rock face
- Available in black or galvanized

**Physical properties**

Square Dimension (mm)	Thickness (mm)	Hole Diameter (mm)	Load Capacity (ton)	Weight (kg)
150×150	8	36	30	1.80





# **MINING PRODUCTS**

## **SECTION 5**

### **GROUT**

**ROCBOLT TECHNOLOGIES CHINA LTD**  
Address: Jennmar Industry Park, Tong Ji Road,  
Gao Xin District, Jining, Shandong, China  
Post Code: 272023  
Tel:+86-537-2480336  
Fax:+86-537-2480338

## PRODUCT NAME:

**Cable Bolt Grout**

## Rocbolt Part number:

RCGROUT80MPA

## OT Material number :

20435628

## Technical Features:

- High strength 80 MPa cable bolt grout for “bottom-up” grouting
- Ready to use, mix with water and pump



## TOP DOWN 80 MPa GROUT

HIGH STRENGTH THIXOTROPIC CABLE BOLT GROUT

WATER ADDITION PER BAG 6 – 7 LITRES PER BAG



## Physical properties

	1 day Compressive Strength (MPa)	Workability (mm)	Weight (kg/bag)
6 litres/bag	≥25	0	20
7 litres/bag	/	160-210	20



# **MINING PRODUCTS**

## **SECTION 5**

### **RESIN CAPSULES & ACCESSORIES**

**ROCBOLT TECHNOLOGIES CHINA LTD**  
Address: Jennmar Industry Park, Tong Ji Road,  
Gao Xin District, Jining, Shandong, China  
Post Code: 272023  
Tel:+86-537-2480336  
Fax:+86-537-2480338

## PRODUCT NAME:

**Fast Resin Capsules**

## Rocbolt Part number:

JL5S45026FE

## OT Material number :

41111126

## Technical Features:

- Separate resin mastic and catalyst encased within a thin plastic film, sealed at each end by wire clips
- Stiffer more robust capsule film improves durability and handling
- Available in diameters of 26, 30mm, other sizes available on request
- Shelf life 3 months when stored as recommended



## Physical properties

Description	26×450mm Resin(fast)
Punched Shear Strength(Mpa)	>22
Uniaxial compressive strength (min)	>60
Min Young modulus(Gpa)	>4
Push out test(kN after 24 hrs)	72
Gel time (fast Mastic)(seconds)	10
Capsule diameter(mm)	25.5
Capsule length(mm)	450
Flop Test(mm)	>380
Anchorage Force(Ton)	25
Weight(kg)	



## PRODUCT NAME:

**Slow Resin Capsules**

## Rocbolt Part number:

JL5S45026SE

## OT Material number :

41111127

## Technical Features:

- Separate resin mastic and catalyst encased within a thin plastic film, sealed at each end by wire clips
- Stiffer more robust capsule film improves durability and handling
- Available in diameters of 26, 30mm, other sizes available on request
- Shelf life 3 months when stored as recommended



## Physical properties

Description	26×450mm Resin(slow)
Punched Shear Strength(Mpa)	>22
Uniaxial compressive strength (min)	>60
Min Young modulus(Gpa)	>4
Push out test(kN after 24 hrs)	72
Gel time (slow Mastic) (seconds)	60
Capsule diameter(mm)	25.5
Capsule length(mm)	450
Flop Test(mm)	>380
Anchorage Force(Ton)	25

## PRODUCT NAME:

**Medium Resin Capsules**

## Rocbolt Part number:

RBWS45026ME

## OT Material number :

20723817



## Technical Features:

- Separate resin mastic and catalyst encased within a thin plastic film, sealed at each end by wire clips
- Stiffer more robust capsule film improves durability and handling
- Available in diameters of 26, 30mm, other sizes available on request
- Shelf life 3 months when stored as recommended

## Physical properties

Description	26 × 450mm Resin(medium)
Punched Shear Strength(Mpa)	>22
Uniaxial compressive strength (min)	>60
Min Young modulus(Gpa)	>4
Push out test(kN after 24 hrs)	72
Gel time (medium Mastic)(seconds)	100
Capsule diameter(mm)	25.5
Capsule length(mm)	450
Flop Test(mm)	>380
Anchorage Force(Ton)	25

## PRODUCT NAME:

**2.4M Twin Resin Capsules**

## Rocbolt Part number:

RBWH240030MSPE

## OT Material number :

41111124

## Technical Features:

- Separate resin mastic and catalyst encased within a thin plastic film, sealed at each end by wire clips
- Stiffer more robust capsule film improves durability and handling
- Available in diameters of 26, 30mm, other sizes available on request
- Shelf life 3 months when stored as recommended



## Physical properties

Description	30 × 2400mm Resin(twin)
Punched Shear Strength(Mpa)	>22
Uniaxial compressive strength (min)	>60
Min Young modulus(Gpa)	>4
Push out test(kN after 24 hrs)	72
Gel time (fast/slow Mastic) (seconds)	18 Spin > 10-60 hold
Capsule diameter(mm)	29.5
Capsule length(mm)	1200x 2 (twin capsule)
Flop Test(mm)	>380
Anchorage Force(Ton)	25

## PRODUCT NAME:

**3.0M Twin Resin Capsules**

## Rocbolt Part number:

RBWH300030MSPE

## OT Material number :

20659088

## Technical Features:

- Separate resin mastic and catalyst encased within a thin plastic film, sealed at each end by wire clips
- Stiffer more robust capsule film improves durability and handling
- Available in diameters of 26, 30mm, other sizes available on request
- Shelf life 3 months when stored as recommended



## Physical properties

Description	30 × 3000mm Resin(twin)
Punched Shear Strength(Mpa)	>22
Uniaxial compressive strength (min)	>60
Min Young modulus(Gpa)	>4
Push out test(kN after 24 hrs)	72
Gel time (fast/slow Mastic) (seconds)	18 Spin > 10-60 hold
Capsule diameter(mm)	29.5
Capsule length(mm)	1500x 2 (twin capsule)
Flop Test(mm)	>380
Anchorage Force(Ton)	25



## PRODUCT NAME:

**Resin Capsule Accessories**

## Rocbolt Part number:

**Parachute:**1PARACHUTE30

**Adapter & Tube:**PCT30\*3600S

## OT Material number :



**Parachute:**20655385

**Adapter & Tube:**41111291

## Technical Features:

- Separate resin mastic and catalyst encased within a thin plastic film, sealed at each end by wire clips
- Stiffer more robust capsule film improves durability and handling
- Available in diameters of 26, 30mm, other sizes available on request
- Shelf life 3 months when stored as recommended

## Physical properties

Description	Capsule Diameter (mm)	Drill Bit (mm)	Picture
Parachute	30	35-38	
Tube	30	35-38	
Adaptor	30	35-38	